

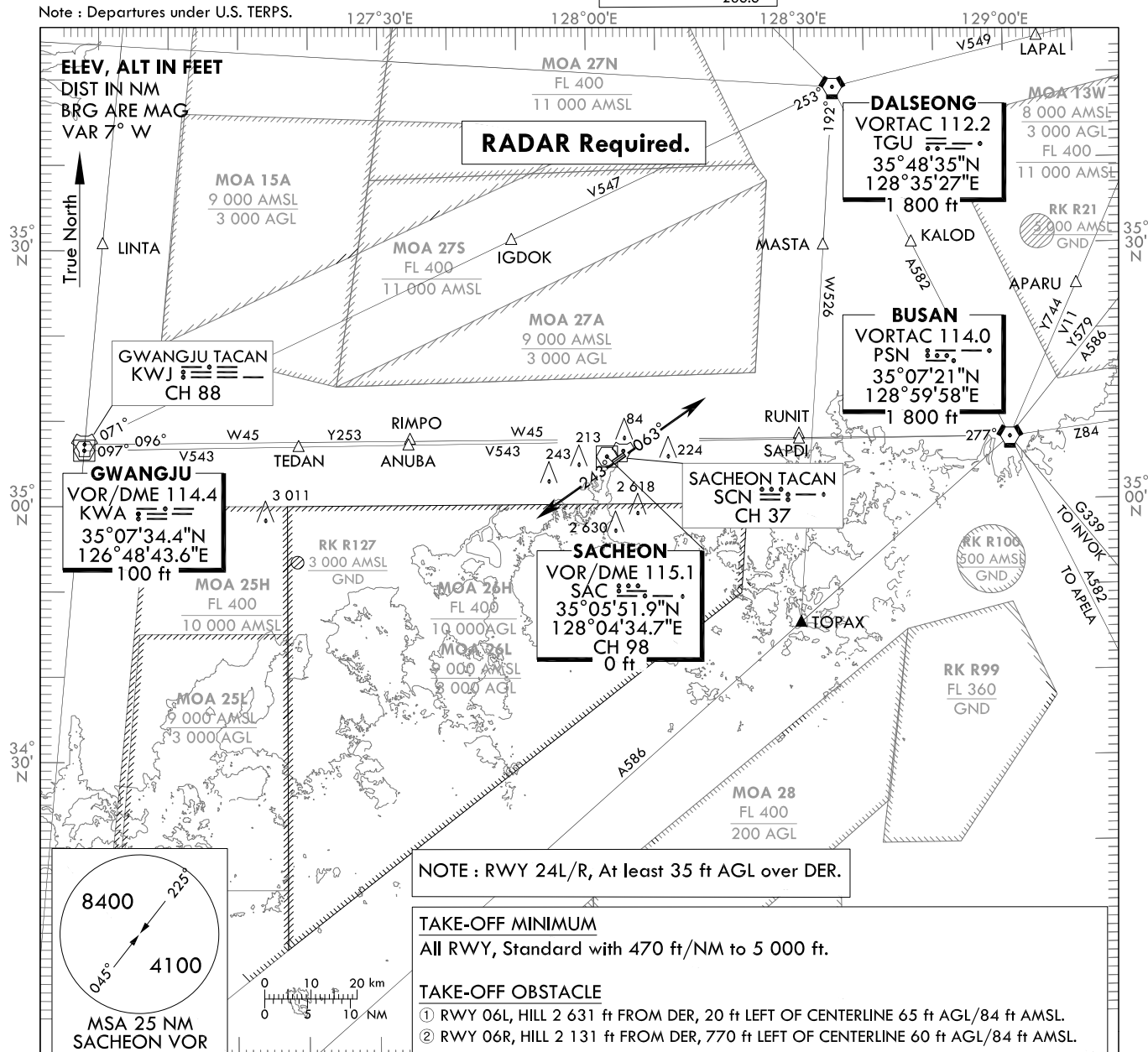
**STANDARD DEPARTURE
CHART - INSTRUMENT(SID)**

TRANSITION ALT 14 000
TRANSITION LVL FL 140

SACHEON DEP 135.4
347.3
SACHEON TWR 118.675
236.6

**SACHEON/Sacheon(RKPS)
RWY 06L/R, 24L/R
SACHEON 5**

Note : Departures under U.S. TERPS.



DEPARTURE PROCEDURE DESCRIPTION

ALL AIRCRAFT : Departure climb rate 470 ft/NM to 5 000 ft.

TAKE-OFF RWY 06L/R : Climb HDG 063° or Climb on assigned HDG by ATC.....

TAKE-OFF RWY 24L/R : At least 35 ft AGL over DER, Climb HDG 243° or Climb on assigned HDG by ATC.....

.....Expect radar vector to intercept filed En-route fix or as assigned route by ATC.

Maintain 5 400 ft or assigned altitude(flight level).

Expect filed altitude/flight level 10 minutes after departure.

LOST COMMUNICATIONS : If radio contact is not established with departure control prior to reaching 5 000 ft,

Continue climb to 8 400 ft before turning to filed fix/Navaid and proceed filed route and altitude.

Change : Information of OBST ELEV(3 028 ft → 3 011 ft).

INTENTIONALLY

LEFT

BLANK

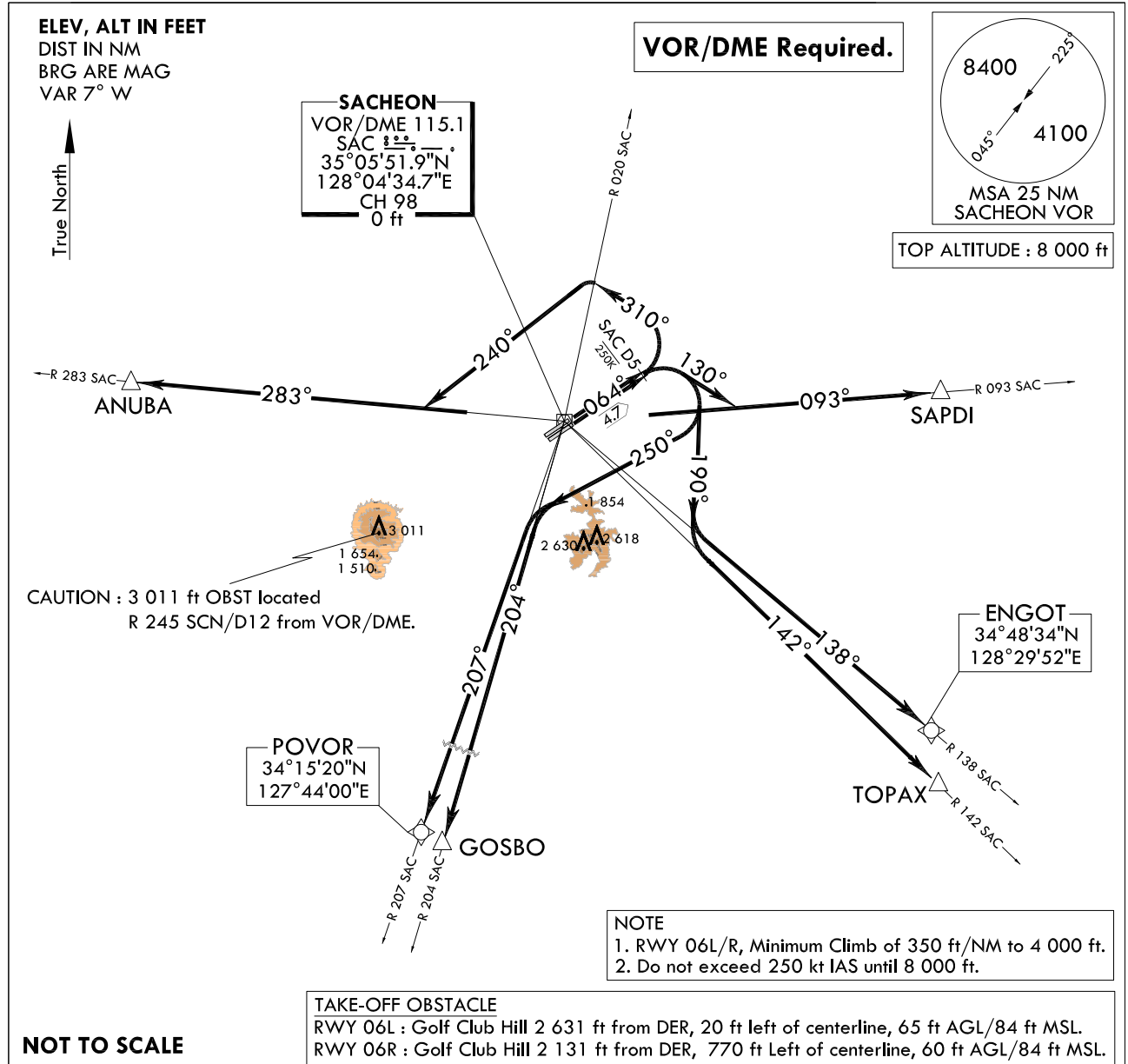
**STANDARD DEPARTURE
CHART - INSTRUMENT(SID)**

TRANSITION ALT 14 000
TRANSITION LVL FL 140

SACHEON DEP 135.4
347.3
SACHEON TWR 118.675
236.6

**SACHEON/Sacheon(RKPS)
RWY 06L/R
SACHEON 1**

Note : Departures under U.S. TERPS.



DEPARTURE ROUTE DESCRIPTION

TAKE-OFF RWY 06L/R : Climb HDG 064° to SAC D5 thence,.....

..... Climb to 8 000 ft via the following transition routes.

ANUBA Transition : Left turn HDG 310° to cross R 020 SAC and left turn HDG 240°
to R 283 SAC and R 283 SAC to ANUBA.

SAPDI Transition : Right turn HDG 130° to intercept R 093 SAC and R 093 SAC to SAPDI.

TOPAX Transition : Right turn HDG 190° to intercept R 142 SAC and R 142 SAC to TOPAX.

GOSBO Transition : Right turn HDG 250° to intercept R 204 SAC and R 204 SAC to GOSBO.

ENGOT Transition : Right turn HDG 190° to intercept R 138 SAC and R 138 SAC to ENGOT.

POVOR Transition : Right turn HDG 250° to intercept R 207 SAC and R 207 SAC to POVOR.

Change : Information of runway in use(RWY 06L/R, 24L/R → RWY 06L/R).

INTENTIONALLY

LEFT

BLANK

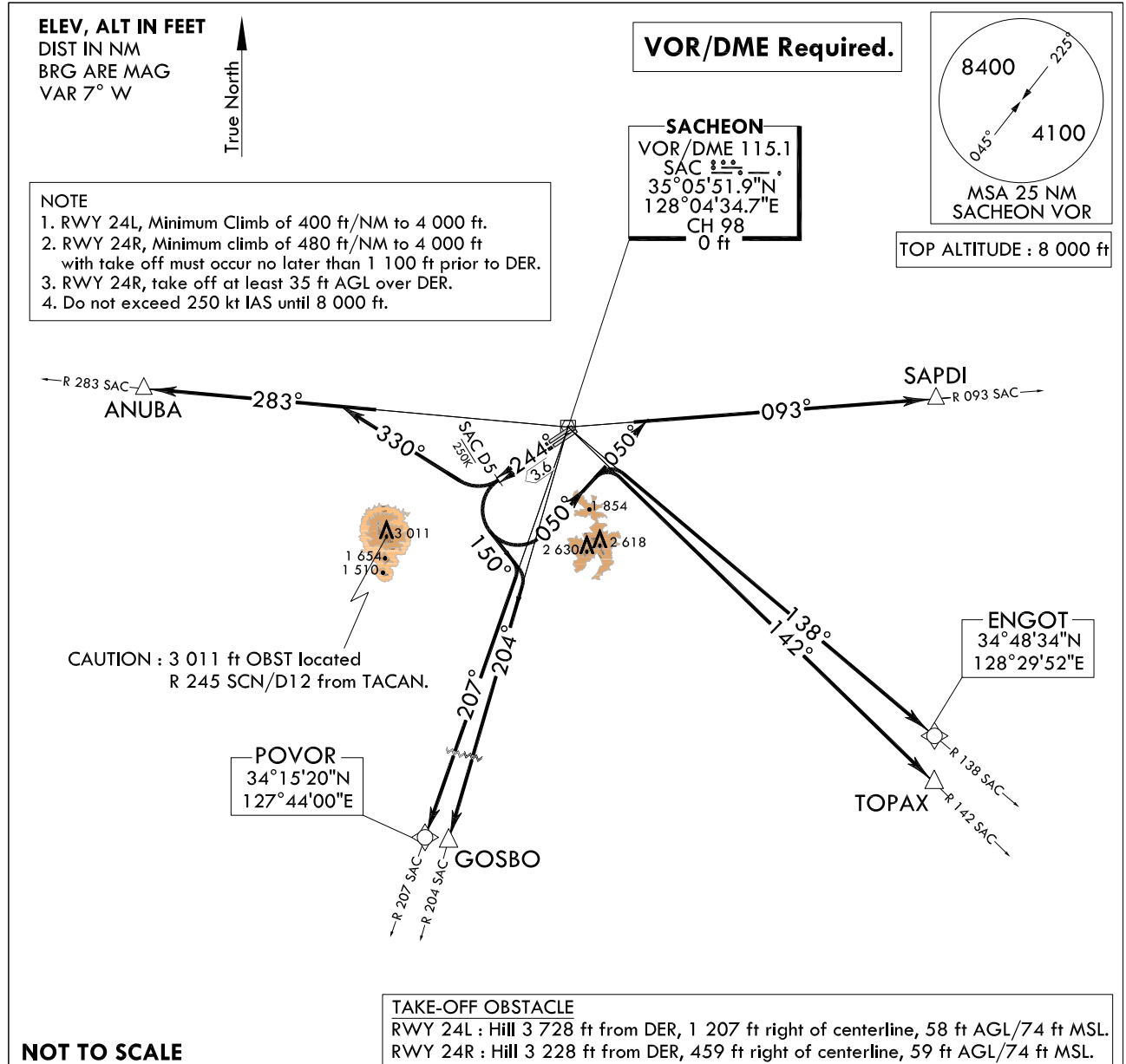
**STANDARD DEPARTURE
CHART - INSTRUMENT(SID)**

TRANSITION ALT 14 000
TRANSITION LVL FL 140

SACHEON DEP 135.4
347.3
SACHEON TWR 118.675
236.6

**SACHEON/Sacheon(RKPS)
RWY 24L/R
SACHEON 2**

Note : Departures under U.S. TERPS.



DEPARTURE ROUTE DESCRIPTION

TAKE-OFF RWY 24L/R : Climb HDG 244° to SAC D5 thence,.....
..... Climb to 8 000 ft via the following transition routes.

ANUBA Transition : Right turn HDG 330° to intercept R 283 SAC and R 283 SAC to ANUBA.
GOSBO Transition : Left turn HDG 150° to intercept R 204 SAC and R 204 SAC to GOSBO.
TOPAX Transition : Left turn HDG 050° to intercept R 142 SAC and R 142 SAC to TOPAX.
SAPDI Transition : Left turn HDG 050° to intercept R 093 SAC and R 093 SAC to SAPDI.
ENGOT Transition : Left turn HDG 050° to intercept R 138 SAC and R 138 SAC to ENGOT.
POVOR Transition : Left turn HDG 150° to intercept R 207 SAC and R 207 SAC to POVOR.

Change : Information of runway in use(RWY 06L/R, 24L/R → RWY 24L/R) and Amended phrase(SCN D5 → SAC D5).

INTENTIONALLY

LEFT

BLANK